



# WORKING EQUITATION INTERNATIONAL REGULATION

*To be applied from February 6<sup>th</sup>, 2020*



# CONTENTS

## PREAMBLE

### I – ORGANISATION

- Art 1.1 – Field and equipment**
- Art 1.2 – Veterinary**
- Art 1.3 – Timing official**
- Art 1.4 – Sound system**

### II – COMPETITIONS

- Art 2.1 – General**
  - A – European Senior Championship
  - B – European Young Riders Championships
  - C – European Cup

### III – JURIES

- Art 3.1 – Composition of juries for the European championship**
  - A – Ground jury
  - B – Ethical Commission
  - C – Technical delegate
  - D – Judges
  - E – Timing official
  - F – Paddock commissioner
  - G – Ground staff

### IV – COMPETITORS

- Art 4.1 – Nationalities**
- Art 4.2 – General entry conditions**
  - A – European championship
  - B – European Cup
- Art 4.3 – Outfit**

### V – HORSES

- Art 5.1 – Entry requirements for horses**
- Art 5.2 – Vaccination procedure**
- Art 5.3 – Tack and equipment**
- Art 5.4 – Shoeing**

### VI – TECHNICAL STANDARDS

- Art 6.1 – Dressage**
  - A – Warming-up field
  - B – Presentation area
  - C – Positioning of judges
  - D – Movements
  - E – Music
  - F – Scoring

### Art 6.2 – Technical and timed ease of handling

- A – General
- B – Walking the course
- C – The course
- D – List of obstacles
- E – Description of obstacles
- F – Negotiating the obstacle and technical ease of handling scoring
- G – Negotiating the obstacle and timed ease of handling scoring

### Art 6.3 – Timed ease of handling

- A – General
- B – Walking the course
- C – The course
- D – Description of obstacles
- E – Scoring
- F – Penalties at obstacles

### Art 6.4 – Cattle sorting

### VII – PROCEDURE

- Art 7.1 – General**
- Art 7.2 – Starting order**
- Art 7.3 – Outside help**

### VIII – PENALTIES

- Art 8.1 – Disqualification**
  - A – During a phase
  - B – During a trial
- Art 8.2 – Warnings**
- Art 8.3 – Exclusion**
- Art 8.4 – Definitions**

### IX – CLAIMS

- Art 9.1 – Complaints**
- Art 9.2 – Report**

### X – RANKINGS / PRIZES

- Art 10.1 – Coefficients per phase**
- Art 10.2 – Rankings**
  - A – General
  - B – Allocation of points
- Art 10.3 – Award ceremony**

## XI – APPENDICES

### Art 10.1 – Dressage

### Art 10.2 – Technical ease of handling

## PREAMBLE

The International Equestrian Tourism Federation is the sole international organisation with the authority to govern Working Equitation competitions.

**Working Equitation is an equestrian activity whose scope is limited to all the movements of “pastoral equitation”, i.e., the practical skills required to lead horses used in traditional trades and cultures with the focus on working with and driving cattle.** It identifies and incorporates the technical movements which are common to these pastoral practices within a general body of knowledge. This body defines the elements that can be normalised to organise a sporting regulation. Through the dissemination of working equitation competitions, the cultural ambition is one of protection and development of equestrian skills relating to cattle driving and sorting. Pastoral equitation is a culturalistic discipline practiced in many countries in Europe, but also in Asia and South and North America, as part of local rural economies, using well-established and highly specific traditions. Working equitation as a sporting equestrian discipline seeks to recognise and encompass diverse equestrian cultures whilst respecting their specificities, but using what they have in common in leading the horse.

The equestrian skills common to all riders representing equitation of different identities include:

- specific cavalry dressage
- leading a horse by hand
- interpreting cattle and anticipating their behaviour for the sorting of one or more animals.

The cultural dimension relating to the discipline and different equitation identities are expressed in:

- the professional techniques handed down from previous generations
- the breeds of horses bred specially in the different identity-based equitation events
- the use of equipment which is characteristic of the culture of each identity-based equitation type
- specific apparel for each identity-based equitation type.

The desire to keep up professional techniques and cultural practices has led to the creation of sports events offering a sporting and cultural form of competition illustrating the intrinsic quality of the horses and their riders.

With its transposition of the day-to-day actions of equestrianism into a sporting format and code, cattle driving and sorting is by far the leading event in this category.

The discipline is designed to show the following:

- **the working horse’s calm comprehension of cattle and** anticipation
- **the rider’s knowledge of cattle and his experience and** finesse.

International team-based working equitation events are designed to demonstrate the equestrian techniques mentioned above.

Forms of working equitation identified to date are:

- Camargue equitation
- Doma Vaquera equitation
- Maremmana equitation
- Portuguese equitation
- Western equitation (Team Sorting)
- And all equitation identified by NETOs.

## I – ORGANISATION

### Art 1.1 - Ground and equipment

The Organising Committee must provide the following:

- ◆ a rectangle of 40m x 20 m for the dressage and as a minimum for ease of handling
- ◆ an enclosed land of 60m x 20m minimum or 70m x 30m maximum for cattle sorting
- ◆ stables,
- ◆ a veterinary inspection area,
- ◆ an area for the presentation to take place,
- ◆ a relaxation area with a jumping obstacle for ease of handling

This list is not exhaustive and may be supplemented by the specification for each competition.

### Art 1.2 – Vet

A vet is appointed by the Organising Committee and, as appropriate, assisted by a commission. Veterinary inspections must take place in a flat area, in a straight line, on a firm but yielding surface without slopes.

Presentation during the veterinary visit can be done either with a halter, cavesson or snaffle depending on the discipline.

Difficult horses and stallions must be presented with a bridle.

### Art 1.3 - Timing Official

The Organising Committee appoints:

- ◆ A timer
- ◆ An electronic stopwatch with a recorder software for timed ease of handling.

### Art 1.4 – Sound system

For the requirements of the competition, the Organising Committee provides for a sound system and made available to the jury, with amps and loud speakers suitable for public events, along with mikes and CD players.

## II – COMPETITIONS

### Art 2.1 – General

All Working equitation competitions organised as part of the FITE must comply with the international rules.

All working individual or team equitation competitions organised under the auspices of FITE must respect the international schedule and regulations in order to secure official recognition as a sporting movement.

Certain articles can be modified by organisers depending on the event, with the formal consent of the FITE.

Commitments must be sent to the organiser, at the latest on the Friday midnight, a week before the competition, on FITE entry forms.

Competitions are broken down into 4 phases:

- 1 dressage
- 1 technical ease of handling and 1 timed ease of handling
- 1 cattle sorting

#### A – European championship for Young riders and senior

A European championship Senior and young riders is organised every year.

#### B – European Cup

- ◆ It aims to bring together during the sports season riders of Working Equitation, to promote the exchange of techniques and gather the competitors,
- ◆ It is organised every year, from January 1<sup>st</sup> to December 31<sup>st</sup>, under the aegis of the FITE by affiliated NETOs and is accessible to all of their licensed riders,
- ◆ Are authorised to organise competitions, NETOs whose Working equitation competition regulation is in accordance with FITE's regulation,
- ◆ Judges can be national judges,
- ◆ Each NETO can organise, per season, one Working equitation competition registered in FITE's calendar,
- ◆ The FITE will register in the calendar of the circuit for the year, the competitions that will have been declared by NETOs, at the latest on November 1<sup>st</sup> of the previous year,
- ◆ The European Cup events cannot be organised during the European Championship weekend, neither the previous one or the following one,
- ◆ FITE will only validate the results of the Working equitation events listed on the calendar.
- ◆ Entries must be sent to the organiser no later than Friday at midnight of the weekend before the competition,
- ◆ The ranking is established and proclaimed by the FITE at the end of the season,
- ◆ The European Working equitation championship is not part of the European Cup events.

## III – JURIES

### Art 3.1 - Composition of juries

For these Championships, international judges are proposed by the Organising Committee and by their membership NETO, then they are validated by the FITE Board of directors.

Ground Jury and the veterinary commission decisions are taken on an absolute majority voting basis of each of the members, with the Jury President having the casting vote.  
The Ground Jury President and the Technical Delegate must be informed of any incidents occurring during the competition.

Judges practice here arbitration in **independence** and impartiality in respect with rules enacted by FITE.

### A – Ground Jury

#### 1 – Members

The President of the Jury and 4 FITE international Working equitation judges chosen by participants nations.

The FITE Technical Delegate, in a consultative role.

If the number of participants NETOs is insufficient :

- 4 countries, the organiser NETO propose one additional judge

- 3 countries, the organiser NETO propose one additional judge and another one is drawn among the other nations.

#### 2 – Role

It must ensure that rules of fair play and sporting fairness are respected.

It must ensure that these rules are applied.

It is responsible for its application by various judges.

It must receive and process claims.

It must validate the results of each phase and the final result.

Cases not appearing in this list are addressed by the Ground Jury. The Jury is competent to take decisions based on common sense and rules of fair play most suitable to the spirit of FITE rules.

### 3 – Its decisions

They are irrevocable.

#### B – Ethical Commission

- ◆ Presided over by the President of the FITE sports commission
- ◆ It also comprises two international judges put forward by the President of this Commission.
- ◆ The FITE Technical Delegate, in a consultative role.
- ◆ It meets upon request from the FITE President, after the competition at a date and venue to be defined
- ◆ Its role is to rule on events that the Ground Jury has failed to resolve: in cases of doping, cheating, behaviour, etc...
- ◆ It may call upon and consult ground judges and the competitors concerned.
- ◆ Expenses linked to meetings of this Jury, including travel and accommodation expenses, are fully covered by FITE.

#### C – Technical Delegate

**The Technical Delegate is the FITE's technical point of reference.**

He is designated by the Board of directors, as proposed by the FITE President.

He works under the authority of the FITE President to whom he reports on his activities, unless otherwise specified in the regulations.

The Technical Delegate is a qualified official:

- in specific riding techniques and the relevant teaching techniques,
- in sports events: organising and preparing competitions.

The Technical Delegate may be assisted by specialist officers: event organisers, course designers, etc... and may encourage training for them:

- ◆ The Technical delegate must ensure that the event complies with the recommendations for organisers as published by FITE. The Technical Delegate must carry out a feasibility visit of the proposed site accompanied by the candidate NETO and their designated representative, before the Annual General Meeting is held to give definitive approval of the presented application.
- ◆ **The FITE's statutory General Assembly is held every year in September conjointly with an international TREC competition, and the feasibility visit for the following year's proposed site must have been carried out before this meeting.**
- ◆ **The relevant Technical Delegate's report is sent to the FITE President at least one month before the date of the General Assembly.**
- ◆ The Technical Delegate reports to the FITE President on any possible difficulties encountered in carrying out his inspection.
- ◆ He checks the organisation during the championship and reports to the President of the Ground Jury.

#### D – Judges

International judges and trainers must follow refresher courses and regularly officiate at events.

The protocol can be consulted on the FITE website [www.fite-net.org](http://www.fite-net.org)

Each judge must have a secretary responsible for carrying his remarks on assessment protocols.

##### 1 – Dressage

They must note each movement by each rider in turn.

##### 2 – Technical ease of handling

They must note each obstacle by each rider in turn.

##### 3 – Timed ease of handling

This is arbitrated by the president of the jury. The judges are posted at different points on the course. They must note down penalties incurred by each rider in turn.

After each competitor, the President of the jury announces that competitor's result to the public.

#### 4 – Sorting

Judges assist the President of the jury during the sorting trials.

#### E – Timing official

Placed under the authority of the Ground Jury President, this official is involved in several phases.

#### F – The paddock commissioner

He is a national judge that checks on both horse and riders when entering and leaving the warming area. If there is an irregularity, he warns the Ground jury members.

His role is to indicate any incident which may occur during rest periods, and to organise the paddock according to starting orders.

#### G – Ground staff

During the timed ease of handling trials, sufficient numbers of ground staff must be present around the performance arena to put the course back together after the passage of each competitor.

## IV - COMPETITORS

### Art 4.1 - Nationalities

The National Federation may hire a rider in international competition if he has the same nationality as said federation. Proof of nationality may be required. For riders with more than one nationality, they will be asked at the age of 18, to decide what their sports nationality will be and therefore which federation they wish to join. For riders under the age of 18 and with more than one nationality, they can choose each year which federation they wish to join.

Riders not residing in their home country may not compete in international competitions under the flag of their country of residence.

*This regulation is based on the general regulation FEI, Article 119- Sport Nationality Status of Athletes.*

### Art 4.2 – General entry conditions

#### A- International Championships

According to the schedule defined by the FITE, each NETO sends the following to the organiser of the International Championship:

- ◆ their intention to participate, at least 90 days before the championship,
- ◆ the list of team members at least 15 days before start of the championship,
- ◆ competitors must be aged at least 14 years old.

Age limits apply to the age of the competitor in the calendar year.

*Example: a rider of 14 years in the calendar year is a rider who celebrates his birthday of its 14 years between 1<sup>st</sup> January and 31<sup>th</sup> December of the year concerned. Athletes take a year older every January 1st.*

#### Seniors:

- ◆ Six riders, of which four will make up the national team, the two remaining riders only competing as individuals.
- ◆ The organising NETO can enter a team + four individual riders.

#### Young Riders:

- ◆ Six riders, of which four will make up the national team, the two remaining riders only competing as individuals.
- ◆ The organising NETO can enter one team + four individual riders.
- ◆ The competitors must be aged at most 21 years old.
- ◆ Riding with 1 hand is required for all phases.

## Riders with disabilities :

Riders with disabilities are allowed to compete under the responsibility of their NETO. The Ground jury is the entity that must adapt the regulation to facilitate their participation.

### B – European Cup

All riders can participate to the Working Equitation European Cup, except with an unfavourable opinion of their NETO. It is a individual competition. Competitors can use different horses during the season.

### Art 4.3 – Outfit

Correct outfit is required.

Competitors must wear the traditional costume corresponding to the working equestrian culture for which they are entering the competition.

Loss of a hat during the phase is not penalised.

## V – HORSES

### Art 5.1 - Requirements for the participation of horses

Horses participating in FITE international competitions must:

- ◆ be aged at least 6 years old
- ◆ possess the appropriate identification document:
  - FEI passport or
  - national passport with a graphical outline, and up-to-date vaccination details according to legislations in the organising country.

The Organising Committee must inform the FITE and all NETOs likely to participate in competitions in good time, publication of the pre-programme, to avoid any difficulties in respecting health obligations appearing above, and/or other national obligations.

Team events are comprised of three horses. Each NETO can enter a replacement horse.

### Art 5.2 – Vaccination procedure

Are mandatory all regulatory vaccinations required by the competent services in each NETO. Vaccination against equine influenza is required to participate in a competition

So as to be considered vaccinated against equine flu, a horse must have been administered:

- a) An initial vaccination comprising 2 anti-flu injections between 21 and 92 days apart
- b) An annual booster, so that the gap between two injections does not exceed 12 months
- c) A vaccination no more than 6 months before the day of the competition.

A horse can compete from the time it received its first vaccination, i.e. after the second injection.

**No injection may be administered in the 7 days running up to the horse's arrival at the competition venue.**

### Art 5.3 - Tack and equipment

Tack must be perfectly suited to the horse and the type of competition.

Horses participating in tests must be equipped with tack used in the traditional saddling corresponding to the working equitation culture for which they are entered.

Members of the jury representing different equestrian cultures are guarantors in their discipline, of the **compliance of drivers' appearance and the tack of the horses.**

The rider can only use one pair of reins.

**Artificial help held in hands are not allowed in tests, except "calos", stick, etc for a maximum length of 1,5 m for the cattle sorting test.**

Protections, gaiters, boots, etc are allowed for ease of handling and cattle sorting tests.

**All type of washers are banned**, protect-girth, protect-curb chain are authorized.



**A – Adjusting the noseband**

The noseband must be two fingers below the zygomatic and it must be possible to put at least one finger between the noseband and the horse's face.

**B – Adjusting the curb chain**

It must respect at least a 45 degrees angle between the bridle axis / horse's mouth and the horse's cheek when adjusting the reins.

**Art 5.4 – Inspection of horses**

At the request of the president of the jury, horses can be examined with a view to identifying injuries or poor treatment.

## VI – TECHNICAL STANDARDS

**Art 6.1 – Dressage****A – Warming-up field**

The ground of the warm-up area must be the same type as that of the presentation area. It must be sufficiently large to allow dressage figures to be practised by several competitors at the same time. During competition, the horse cannot be ridden by another rider. Draw-reins are forbidden. Resting with tethers is authorised.

**B – Presentation ground**

The presentation ground used for the dressage event must be 40 m x 20 m, flat, rectangular with no stones or objects which may compromise the competitor's expression, and, as a result, jury marking. It is strongly recommended that the area be sanded. It can be grass if the type of ground is not too hard and not slippery. It must be marked out by a perfectly aligned border, not more than 50 cm high. The arena must be located at all points at a suitable distance from any enclosures (barriers, walls, etc.). This distance must allow free circulation of riders at 3 different paces around the arena. The entry to the arena must be an opening at the centre of the smaller side, opposite the President jury. It must be closed after each competitor enters. If the arena remains open during the presentation and a competitor comes out of the arena during the presentation, he cannot be disqualified for this reason. The public must be separated from the arena by a distance of at least 5 meters.

**C – Place of the juries**

The jury sits on the small side, opposite the entrance to the dressage arena, and on the larger sides. The President sits in the middle, on the shorter side, and is surrounded by 2 other judges placed to his right and his left at the two ends of the shorter side, or on the 2 longer sides of the arena. If there are 5 judges, they shall be posted as indicated above, ie: 3 on the shorter side on each side of the President, and 1 on each of the longer sides.

The President of the jury starts each competitor by sounding a bell. The competitor has 1 minute after the bell has sounded to begin their dressage. Any overshooting or departure before the bell will lead to the competitor being disqualified.

**D – Movements**

Dressage comprises movements to be executed in protocol order. The maximum time for this sequence of movements is 7 minutes from starting salute to final salute. If the competitor has not finished the dressage movement, he will not be judged on the remaining figures. The sound of the bell is the warning.

During the whole presentation, the competitor must lead the horse only by one and same hand. The competitor can use the other hand to lengthen or shorten the reins, action must be short and behind the leading hand. At the time of saluting the jury, it is understood that female riders will incline their heads slightly, whilst male riders will lift their hat with their free hand.

## E – Music

For the dressage presentation, competitors can use a musical background of their choice. Music must be harmonious with the movements executed and sequencing.

## F – Scoring

Each movement, as well as overall scores, are scored by each judge from 0 to 10 according to the following scale:

|                     |    |
|---------------------|----|
| Excellent:          | 10 |
| Very good:          | 9  |
| Good:               | 8  |
| Very Satisfactory:  | 7  |
| Satisfactory:       | 6  |
| Sufficient:         | 5  |
| Insufficient :      | 4  |
| Mediocre :          | 3  |
| Very insufficient:  | 2  |
| Difficult to score: | 1  |
| Not completed:      | 0  |

Course fault: → - 5 pts / fault.

The President of the jury stops the rider and restarts the competitor where the fault took place. The clock stops.

The use of the voice: → - 2 pts / figure.

A third course fault results in disqualification.

Points attributed to each competitor are calculated from the average of points given by each judge after the lowest and highest scores have been removed.

## Art 6.2 – Technical and timed ease of handling

### A – General

Technical ease of handling phases can take place during a given period of time, at the Course Superintendent's discretion. **Technical ease of handling takes place before the timed ease of handling.**

In scoring this phase, judges must take into account the regularity and fluidity of movement for each obstacle, the ease with which the competitor negotiates the obstacles and the correction of aids.

If time allowed is exceeded, the President of jury lets it be known to the competitor by ringing the bell. The stopwatch is stopped; the competitor goes out of the course without completing the test.

For technical handling, crossing of device is noted more favourably in galloping than in a lower speed.

### B – Reconnaissance

The Course Superintendent must ensure that all the obstacles can be negotiated as easily by a left-handed as a right-handed competitor. Before the beginning of each phase, competitors can perform reconnaissance of the obstacles on foot through the course. For this, the course is opened by the President of the jury for at least 15 minutes. Opening and closing are announced by the sounding of a bell.

### C – The course

The course comprises 10 to 15 obstacles that are numbered and flagged, chosen from the list below.

**Devices, start and finish line are flagged and numbered.**

### D – Scoring

1. Gate
2. Jug
3. Corridor with bell
4. Double-pole slalom, **for seniors only**
5. The magic triangle
6. Rein back,

7. Lace pick-up from barrel
8. Special slalom
9. Figure-8 barrels
10. Bridge
11. Livestock pen
12. Water-filled ditch
13. Hat
14. Side pass to the left, for seniors only
15. Side pass to the right, for seniors only
16. Jump

## E – Description of obstacles

### 1. Gate

This is a gate of a height of between 1.5 and 2 meters, and wide 1.3 meters minimum, closed using an iron ring or flexible material.

The gate may open to the right or left, according to the layout of the course, but it must always be such that it is opened on the opposite side to that by which the rider arrives.

With his free hand, the rider opens the gate, goes through it entirely and closes it behind him. The rider slides his hand along the door without releasing it.

This obstacle can be negotiated twice. In this case it is passed to the other hand.

For the timed handling, the course designer can replace the gate by a rope.

### 2. Jug

This is a table around 1 meter high with an object symbolising a jug of water and placed on the table. The rider grasps the object on the table, raises it to minimum height of his shoulder and then puts it down in its original position. If the competitor raises the object insufficiently: 10 penalty points.

### 3. Corridor with bell, straight, "L" or "double L", "U"

The rider enters the corridor, moves to the end and rings the bell with his free hand before leaving.

The corridor is 1.2 meters wide minimum for straight corridor and 1,50m wide for corridor with angle.

Each segment of corridor has a minimum of 2 m, realised in planks or using bars of obstacles placed or not on brackets to a maximum of 30 cm from the ground. At the end of the corridor, a suspended bell can be reached by left and right-handed riders.

### 4. Double-pole slalom, for seniors only

The obstacle comprises of 2 parallel rows of stakes remote 6 m from each other. In each row, each stake is remote 6 m that the one that precedes it. The first row includes the stakes n°1; 3; 5; 7, the second row includes the stakes n°2; 4; 6.

The obstacle is set out so that stake number 2 is located between stakes n°1 and n°3, and stake n°4 between stakes n°3 and n°5, and stake n°6 between stakes n°5 and n°7.

Any modification to the compulsory course constitutes a course error which must imperatively be rectified before the crossing of the next obstacle.

### 5. The magic triangle

The obstacle comprises 3 drums placed at three corners of an equilateral triangle with 6m sides.

The rider negotiates the obstacle, scrupulously respecting the course plan. Any modification to the compulsory course constitutes a course error which must imperatively be rectified before the crossing of the next obstacle.

### 6. Rein back, straight, "L" or "Double L", "U", in loop

This is a corridor made up of planks or obstacle bars placed on brackets, to a maximum of 30 cm from



the ground. Each segment of the corridor is minimum 2 m long and 1.5 meters for a corridor with angle. The rider must rein back all along the corridor.

### 7. Lace pick-up from barrel

The obstacle comprises a barrel A containing a spear, a post with a 10-cm diameter ring and a barrel B, which is empty. The rider grabs the spear in barrel A. It takes the ring, and then deposits both in barrel B.

### 8. Special slalom

The obstacle comprises 6 mobile poles around 2 meters high, which are aligned, and 4 to 6 meters apart.

Any modification to the compulsory course constitutes a course error which must imperatively be rectified before the crossing of the next obstacle.

For young riders, the route is made going through posts.

### 9. Figure-8 barrels

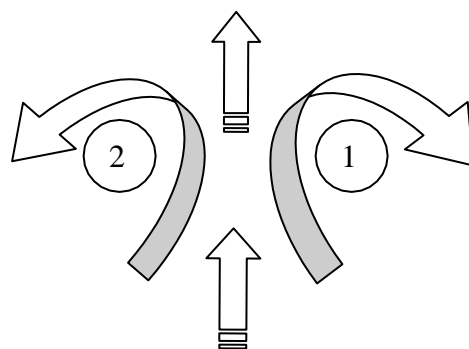
The obstacle comprises 2 barrels, 6m apart.

The rider approaches the obstacle from the middle, goes around the 2 barrels.

The rider must have performed a complete figure-8 around the 2 barrels. For technical ease of handling, change of lead foot must be between the 2 barrels.

Any modification to the compulsory course constitutes a course error which must imperatively be rectified before the crossing of the next obstacle.

The ringmaster decides about the direction to pass the barrels.



### 10. Bridge

This is a 3 to 6 meters long bridge and 0.8 to 1.5 meters wide, between 0.2 and 0.5 meters high. The obstacle must be built so as to ensure good overall stability and safety. It can be lined over the whole length by decorative elements connected with working equitation or the culture of the organising country, or ornamental trees.

It comprises 2 sidebars of 0.40 m high maximum, not fix.

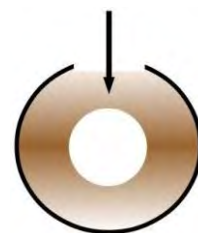
The obstacle must be crossed at the walk for technical ease of handling, and free gait in timed ease of handling.

### 11. Livestock pen

A pen around 1.5m high and 3m internal diameter, around which competitors must circulate. The passage around the pen is marked out by boards from 1.5m to 2m and from 0.4m to 0.6m wide and placed 1.5m from the pen at all points.

The rider enters the passage between the board and the pen, using the direction of his choice, goes around the pen and re-enters the corridor using the other direction.

For the timed handling, the rider goes once by the hand of his choice.



### 12. Water-filled ditch

This is an area covered with a waterproof tarpaulin which may be filled with water. The area to cross is marked out by flags which indicate the beginning and end of the obstacle. It is bordered by 2 sidebars of 0.40 m high maximum, not fix.

### 13. The hat

The rider crosses an opening 2m wide, 2m from the first of the three posts. Each post is around 1,8 m high, at 3m intervals. The rider moves in a straight line to the furthest post. He takes hold of the hat and performs a slalom rein back to return. He places the hat on the post nearest the opening door and continues to rein back to exit, above the flagged line.

The hat has to be reachable by left and right-handed riders.



### 14. Side pass to the left

One or more poles, 3-4 meters long, placed on brackets to a maximum of 0,10 m from the ground. **The obstacle is marked out straight, in "L" or "Double-L" formation.**

The obstacle can be negotiated in two movements, either successively, or as a new obstacle. In which case it is negotiated with the other hand.

The rider must complete the sideways movement even if the poles have fallen, otherwise he may be disqualified.

The horse must have two hooves on each side of the pole.

### 15. Side pass to the right

One or more poles, 3-4 meters long, placed on brackets to a maximum of 0,10 m from the ground. **The obstacle is marked out straight, in "L" or "Double-L" formation.**

The obstacle can be negotiated in two movements, either successively, or as a new obstacle, in which case it is negotiated with the other hand.

The rider must complete the sideways movement even if the poles have fallen, otherwise he may be disqualified.

The horse must have two hooves on each side of the pole.

### 16. Jump

It is a natural obstacle, "jumping" and barred, 0.60m high maximum and 2m front minimum.

#### F – Negotiating the obstacle and technical ease of handling scoring

Each obstacle is scored and the course is timed. Judges must take into account the regularity and fluidity of movements for each obstacle, the ease with which the competitor negotiates the obstacles and the correction of aids.

The penalties are 2 points subtracted from the points awarded to the competitor by each judge.

Each obstacle is scored from 0 to 10 according to 5 criterions :

- ◆ Contract
- ◆ Style
- ◆ Gaits according to the concerned obstacles
- ◆ Overall score
- ◆ Shoeing and tack

The gallop-step and no-gallop transitions are about 2m before and after the device.

A trotting device, the maximum score is 4 out of 10. The realization in step leads the note 0.

The penalties are 2 points to subtract from the total points awarded to the competitor by each judge.

| Device          | Style from 0 to 10 | Penalties to - 2 pts                  | Device not realized, note 0 on the exercise |
|-----------------|--------------------|---------------------------------------|---|
| The Door        |                    | Door Unleashed                        | Not Closed                                  |
| Jug             |                    | Insufficiently lifted, overturned pot | Reverse table                               |
| Musical hallway |                    | Fallen bar                            | Do not ring the bell                        |
| Parallel Slalom |                    | Fallen stake                          |   |
| Clover          |                    | Bottle moved                          | Bottle dropped                              |
| Back            |                    | Falling Bar                           |   |
| Aiguillette     |                    | Missed ring                           | Spilled bottle, throws on the ground        |
| Slalom          |                    | Fallen stake                          |   |
| Bridge          |                    | Fallen bar                            | Allure other than the step, foot out        |
| Enclos          |                    | Section of fallen bars                | Horse out                                   |
| Ford            |                    | Fallen bar                            | Allure other than the step                  |
| Hat             |                    | Fallen bar                            | Piquet fallen, hat fell                     |
| Lateral passage |                    | Fallen bar                            |   |

|              |  |                        |                   |
|--------------|--|------------------------|-------------------|
| Jump         |  | Fallen bar             |                   |
| Other faults |  | Refused, stolen, volte | Take out pennants |

**G - Negotiating the obstacle and timed ease of handling scoring**

The ranking is performed from the time achieved by competitors to complete the course, increased penalties for the faults occurring in the obstacles.  
Gaits are free.

**Time penalties**

|                          |   |
|--------------------------|---|
| Gate                     | 5 seconds ☒ for letting go of the gate<br>Disqualified for failing to close the gate or knocking the obstacle over.   |
| Jug                      | 5 seconds ☒ for not having lifted the object sufficiently<br>5 seconds ☒ for setting the object down wrongly: object knocked over<br>Disqualified for knocking the table over |
| Corridor with bell       | 5 seconds ☒ per fallen plank or pole<br>Disqualified if fails to ring bell or fails to exit corridor between the flags.   |
| Doble-pole slalom        | 5 seconds ☒ for each stank knocked over   |
| The magic triangle       | 5 seconds ☒ for each barrel knocked over or moved   |
| Rein back                | 5 seconds ☒ per pole knocked over with a maximum of 20 seconds<br>Disqualified if fails to exit the corridor between the flags.   |
| Lace pick-up from barrel | 5 second bonus ☒ per successful ring<br>5 seconds ☒ for knocking over the barrel<br>5 seconds ☒ for not putting the lance in the barrel, or if it comes out                   |
| Special slalom           | 5 seconds ☒ per pole knocked over   |
| Figure-8 barrels         | 5 seconds ☒ for knocking over or moving the barrel<br>Disqualified after knocking over 2 barrels.   |
| Bridge                   | 5 seconds ☒ per pole knocked over, foot partially inside, etc...<br>Faults can be combined  |
| Livestock pen            | 5 seconds ☒ per section of horizontal poles fallen with a maximum of 20 seconds.  |
| Water-filled ditch       | The rider must pass between the two rows of flags at the entrance and exit of the obstacle.   |
| The hat                  | 5 seconds ☒ for knocking the post over<br>5 seconds ☒ for failing to deposit the hat  |
| Side pass                | 5 seconds ☒ per pole knocked off  |
| Jump                     | 5 seconds ☒ per pole knocked over   |

## Art 6.4 – Cattle sorting

For International Championships, this phase is individual and timed. It takes place in two rounds with domestic cattle.

Cattle is identified by a necklace with numbers or letters.

The phase takes place in a rectangle divided into two equal halves by a line materialized by two visible flags.

Before the start of the cattle sorting phase, one or two “non competitor” riders must be provided by the organizer to handle cattle and get them to discover the field.

Cattle will be moved in calm for 5 minutes maximum under the control of judges.

In the first half, called “parking area”, are the 10 animals. It is located opposite to the entrance gate. The second half is called “sorting area”. The designated animal should be conducted there and kept isolated for 15 seconds. The rest of the cattle must remain in the parking area.

- ◆ The competitor has 60 seconds to enter the ground, the jury will name him the animal that he must sort.
- ◆ The jury designates the animal that the rider has to sort when crossing the median line.
- ◆ When the bell rings, the competitor has 60 seconds to cross the median line, when he crosses the line, the jury starts the stopwatch of the phase.
- ◆ In a time of 90 seconds, the competitor must separate the designated animal from the rest of the cattle and bring it in the sorting area. The four legs of the calf must cross the median line.
- ◆ If any animal, maximum three, enters the sorting area, the competitor must bring these animals back into the parking area.
- ◆ The presence of four animals in the sorting area will result in elimination for this phase.
- ◆ The 15-second count begins when the designated animal is the only one to be present in the sorting area.
- ◆ If during the 15 seconds, one or several animals pass the median line to go in the sorting area, the timer stops. The rider must bring the animals in excess back in the parking area. When there is only one animal remaining in the sorting area, the count of 15 seconds will start again from the beginning.
- ◆ If the competitor exceeds the time limit without sorting the designated animal, he will be assigned a “No Time”.

The round ends with the sound of the bell of the President jury.

Competitors are classified on the basis of the time that they put to end the round.

At the end of the round, the competitor must bring the cow back in the parking area.

## VII - PROCEDURE

### Art 7.1 – General

Competitions take place over two days at least. Schedules for the three phases are communicated at the latest on the evening of the previous day of the first phase.

### Art 7.2 – Starting order

For the World or European Championships, the team starting order is decided by a random draw carried out by the Board of directors or the General assembly preceding the championship.

If this is not the case, it is carried out by the president of the jury in the presence of the judges and the team leader of each NETO involved in the competition.

The starting order is posted at least 2 hours before the beginning of the phase.

Each team leader decides in which order his riders will pass.

Individual riders must go after the departure of the last competitor of the last team. Individual competitors are interspersed in a way that two competitors from the same nation do not follow. During the team leaders meeting, the handling plan will be distributed to the team leaders.

Failure to respect the starting order will result in the elimination of the competitor from that phase. However, in case of justified absence, the jury may make an exceptional modification to the starting order.

For each phase, if a rider is not present for his start, he has 30 seconds after the president of the jury has called him to come forward. Beyond that time, the competitor is disqualified from that phase.

### **Art 7.3 – Outside help**

During the trial, competitors are not allowed any outside help. Information or advice can only be given to riders during warm-up and after the competition. However, if a rider falls, he can be helped to control the horse **and get back into the saddle**.

Any rider having benefited from unauthorised outside help is automatically disqualified from the phase.

## **VIII – PENALTIES**

### **Art 8.1- Disqualification**

#### **A – During a phase**

Is disqualified from the event, all rider:

- ◆ arriving outside the official start time for one of the phases,
- ◆ starting without having been authorised to do so by the jury,
- ◆ who waits more than one minute after the bell has rung,
- ◆ who exits the arena during dressage execution and ease of handling (4 legs outside),
- ◆ whose horse refuses to move forward for more than 20 seconds, or repeatedly refuses to obey,
- ◆ who crosses an obstacle entered once on track,
- ◆ who crosses an obstacle of handling exercises before completion,
- ◆ 3 refusals at the same obstacle,
- ◆ who uses artificial aid held in hand, except those authorised for the cattle sorting,
- ◆ who does 3 faults in the dressage
- ◆ does not-rectify a course fault, and ease of handling,
- ◆ a rider who abandons,
- ◆ a rider having received 3 warnings
- ◆ a rider who makes contact with cattle, competitor or horse,
- ◆ whose horse falls, or falls from the horse
- ◆ has exterior help of team leader

#### **B – During a trial**

The following will lead to disqualification from the event:

- ◆ a rider found guilty of doping, according to prevailing FEI regulations
- ◆ a rider who intentionally or unintentionally inflicts suffering or excessive discomfort to an animal, horse or cattle (FEI),
- ◆ each horse with blood on his mouth, nose, flanks, or with indicated marks of whip or spur,
- ◆ a rider whose horse is stopped by the vet and the President of the jury,
- ◆ for injury or poor treatment of the horse.

### **Art 8.2- Warnings**

The President of the jury can issue:

- ◆ a first warning for any behaviour within the team which may be considered brutal, non-compliant with a sporting spirit, or leading to exaggerated disturbance amongst the cattle,



- ◆ a second warning for repeating that behaviour,
- ◆ at the third warning, the competitor is disqualified from the phase.

Warnings are cumulative in all phases.

For the cattle sorting phase:

The ground jury can give:

- ◆ a first warning to each behaviour judged more violent or causing exaggerate confusion of cattle, the competitor is warned by a whistle. The jury show a yellow card.
- ◆ In case of recidivism, the bell rings and the jury show a red card. The competitor is eliminated from the round.

### **Art 8.3- Exclusion**

Any rider not respecting a judge's decision or behaving uncivilly towards a judge will be excluded from the competition, and his entry fee will not be reimbursed.

### **Art 8.4- Definitions**

#### **A – Refusal**

A stop followed immediately by a straight jump, is not penalised.

The pony/horse may make a sidestep, but if he backs up, even by one step, this is considered a refusal. After a refusal, if the competitor tries again or repeats the movement unsuccessfully, or if the pony/horse is presented to the obstacle after backstepping, and if the pony/horse stops and steps back again, this is considered a second refusal, and so on.

#### **B – Run-out**

A pony/horse is considered to have run-out if, when faced with the obstacle, he avoids crossing it in such a way that the rider has to present the pony/horse to the obstacle again.

#### **C – Circle**

The competitor is penalised for a circle if he/she re-crosses the path taken before crossing an obstacle. Having been penalised for a refusal, run-out or fall, a competitor may retake the original path by completing a volte without incurring a penalty point so that he/she can present the pony/horse to attempt the obstacle a second time.

#### **D – Brutality**

It can be defined as:

- 1 whipping on the head,
- more than 3 whippings,
- suddenly tearing the mouth with bit or similar actions,
- an excessive or persistent used of lower leg or spurs,
- etc

#### **E – Rider fall**

A rider is considered to have fallen when there is physical separation between the pony/horse and the rider.

#### **F – Horse fall**

A pony/horse is considered to have fallen when the shoulder and/or haunches touch the ground, or lean on a part of an obstacle.

#### **F – Uncorrected course error**

A course error is considered to have occurred when the rider,

- ◆ does not complete the course according to the course plan,
- ◆ does not go through the obstacles and start and finish lines in the proper order,
- ◆ goes through an obstacle that is not part of the course or misses out an obstacle.

## Art 9.1 – Complaints

Only the team leader can lodge a complaint against a competitor or a horse during a phase or trial or against the ranking of the latter or concerning its organisation or its running on his own account, on behalf of the NETO he represents and/or on behalf of a competitor who is a member of his team.

The right to lodge a complaint is exclusively reserved to competitors in individual events.

Any complaint must be made in writing accompanied by the sum of 50 euros which is retained by the FITE if the complaint proves to be unsubstantiated.

No verbal complaints are admitted.

To be valid, any complaint must be submitted to the Ground Jury President:

- Before the start of the event, if it concerns the organisation of a competition, the qualification of competitors or horses,
- At latest half an hour after the announcement/publication of each phase and/or the definitive ranking.

Any fortuitous events outside of the organiser's control cannot be a subject for a complaint. Video evidence cannot be considered by the jury.

## Art 9.2- Reports

The team leaders, officials and Organising Committee members must submit a report to the Ground Jury concerning any presumed acts of cruelty as regards to horses or other violations of the Articles and Regulations.

The Ground Jury, having listened to the parties concerned can impose the following:

- an oral or written warning,
- a 50 euros to 500 euros fine,
- disqualification for the current phase or for the rest of the event.

## X – RANKINGS / PRIZES

### Art 10.1 – Coefficient per phase

A coefficient applies according to the table below:

| DRESSAGE | TECHNICAL EASE OF HANDLING | TIMED EASE OF HANDLING | SORTING   |
|----------|----------------------------|------------------------|-----------|
| 1        | 1                          | 1                      | 0,5/round |

### Art 10.2 – Rankings

#### A – General

A competitor can only be ranked for the event if they have participated without withdrawing or being eliminated and if they have been placed in each of the phases.

A rider eliminated on a phase appears on the ranking with 0 as a score on the phase.

In no instance can the marks of a better placed individual rider be substituted for use in the team result. The individual ranking, in which the team members will also figure, will be announced separately.

#### B – Senior team ranking

A team comprises three or four competitors. The team placings will be calculated on the basis of the sum of the points of the best three members of each team.

A national team of three people can only be placed if its three representatives have been placed in the championship.

#### C – Young Riders team ranking

A team comprises three or four competitors. The team ranking will be calculated on the basis of the sum of the points of the three best members of each team.

A national team of two people can only be placed if its two representatives have been placed in the

championship.

### D – Allocation of points

Example for 20 competitors:

1<sup>st</sup> 21 points

2<sup>nd</sup> 19 points

3<sup>rd</sup> 18 points

4<sup>th</sup> 17, 5<sup>th</sup> 16, 6<sup>th</sup> 15, 7<sup>th</sup> 14, 8<sup>th</sup> 13, 9<sup>th</sup> 12, 10<sup>th</sup> 11, 11<sup>th</sup> 10, 12<sup>th</sup> 9, 13<sup>th</sup> 8, 14<sup>th</sup> 7, 15<sup>th</sup> 6, 16<sup>th</sup> 5, 17<sup>th</sup> 4, 18<sup>th</sup> 3, 19<sup>th</sup> 2 and 20<sup>th</sup> 1.

### E – Phases ranking

1. Working test

It is realised by summing all the scores. In case of a tie for the three first ranks, it is the sum of the whole scores that will identify the ranks. If there is another tie, the number of higher notes will be taken into account.

2. Technical handling

Same as the work test.

3. Timed handling

Is made by taking into account the best time.

4. Cattle sorting

Is made by summing the number of animal and the times of the two steps.

| N | Rider   | 1 <sup>st</sup> step |          |       | 2 <sup>nd</sup> step |          |       | Total of both steps |        |          |       |
|---|---------|----------------------|----------|-------|----------------------|----------|-------|---------------------|--------|----------|-------|
|   |         | Animal               | Time     | P / T | Animal               | Time     | P / T | Step                | Animal | time     | P / T |
| 1 | André   | 1                    | 00 :18,0 |       | 1                    | 00 :16,3 |       | 2                   | 2      | 00 :34,3 |       |
| 2 | Betty   | 1                    | 00 :21,5 |       | 1                    | 00 :22,8 |       | 2                   | 2      | 00 :44,3 |       |
| 3 | Charles | 1                    | 00 :20,5 |       | 0                    | 00 :29,1 |       | 1                   | 1      | 00 :49,6 |       |
| 4 | Danny   | 0                    | 01 :30,0 |       | 1                    | 00 :31,0 |       | 1                   | 1      | 02 :01,0 |       |
| 5 | Edouard | 0                    | 01 :30,0 |       | 0                    | 01 :30,0 |       | 0                   | 0      | 03 :00,0 |       |

### F – Tie

In case of a tie for the podium, winner(s) are identified by summing the places in the ranking, exemple :

- rider n°1, ends 1<sup>st</sup>, 4<sup>th</sup> and 7<sup>th</sup> = 12<sup>th</sup>

- rider n°2, ends 2<sup>nd</sup>, 3<sup>rd</sup> and 5<sup>th</sup> = 10<sup>th</sup> → the 2<sup>nd</sup> rider is the winner.

If there is another tie, the cattle sorting ranking will identify who the winner is, then the working test, then the technical handling and at last the timed handling.

### Art 10.3 – Award ceremony

In total, the competition gives rise to:

- ◆ 1 individual ranking with prize for dressage,
- ◆ 1 individual ranking with prize for technical ease of handling,
- ◆ 1 individual ranking with prize for timed ease of handling,
- ◆ 1 individual ranking with prize for cattle sorting,
- ◆ 1 combined ranking per team,
- ◆ 1 combined ranking per individual.

ie: 6 rankings in all.

Art 10.4 : European Cup

To be on the final ranking, the competitor needs to have participated, in at least 2 competitions in 2 different countries.

Two countries need to be represented.

Each country can organise two competitions of which one can only be made up with 3 tests (working test, technical handling and timed handling).

The number of annual competition is not limited.

The final ranking is obtained by the addition of **each competitor's results**.

The point scale is :

1<sup>st</sup> : 30

2<sup>nd</sup> : 25

3<sup>rd</sup> : 20

4<sup>th</sup> 19, 5<sup>th</sup> 18, 6<sup>th</sup> 17, 7<sup>th</sup> 16, 8<sup>th</sup> 15, 9<sup>th</sup> 14, 10<sup>th</sup> 13, 11<sup>th</sup> 12, 12<sup>th</sup> 11, 13<sup>th</sup> 10, 14<sup>th</sup> 9, 15<sup>th</sup> 8, 16<sup>th</sup> 7, 17<sup>th</sup> 6, 18<sup>th</sup> 5, 19<sup>th</sup> 4, 20<sup>th</sup> 3, for the 21<sup>st</sup> to 30<sup>th</sup> 2, 1 to each competitor under the 30<sup>th</sup> position of the final ranking.

In case of a tie for the podium, competitors will be ranked according to:

The number of competition,

The bigger number of points scored in one (or two) tests.

The award ceremony will take place during the European Cup of the next year.

## **XI – APPENDIX**